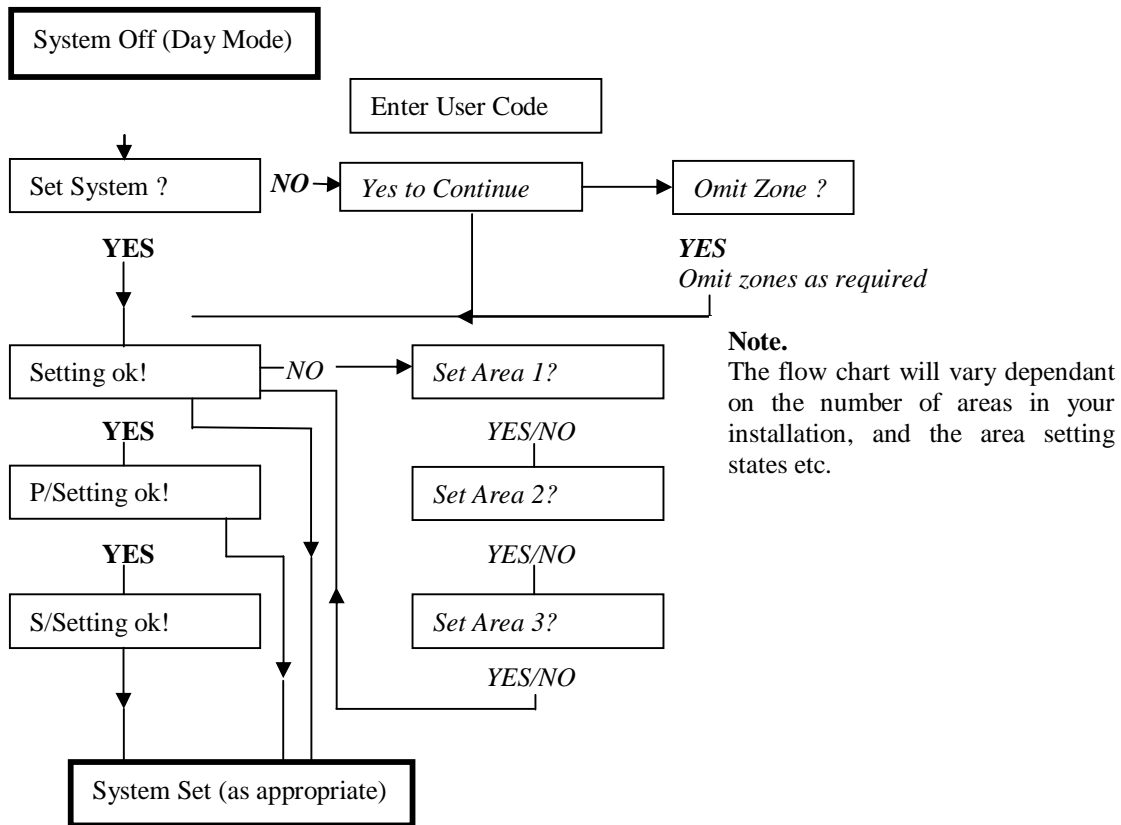


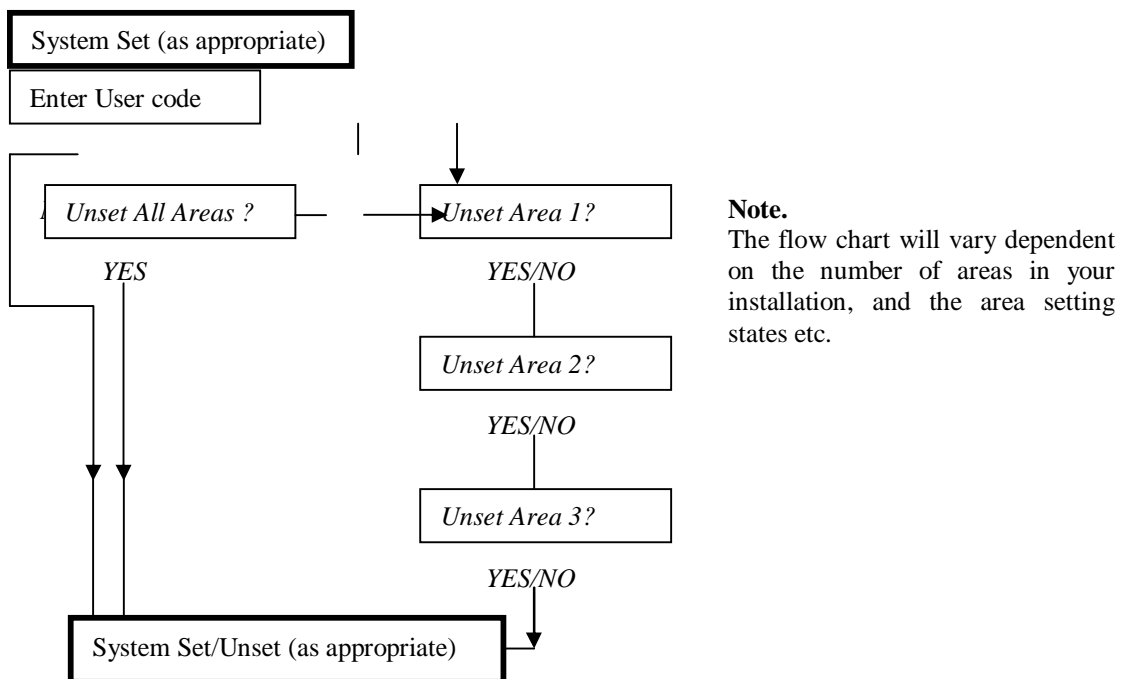
**Setting Options Flow Chart**

*Italic is used to indicate, only available on area installation and functions may not be available to your code.*



**Unsetting Options Flowchart**

Enter protected installation and proceed via entry route to the keypad. Entry warning tones may be sounding.



**Reset Flow Chart**

**Record the cause of Alarm.** Return to Day Mode and/or Silence Alarm (If a PA reset the PA switch).

